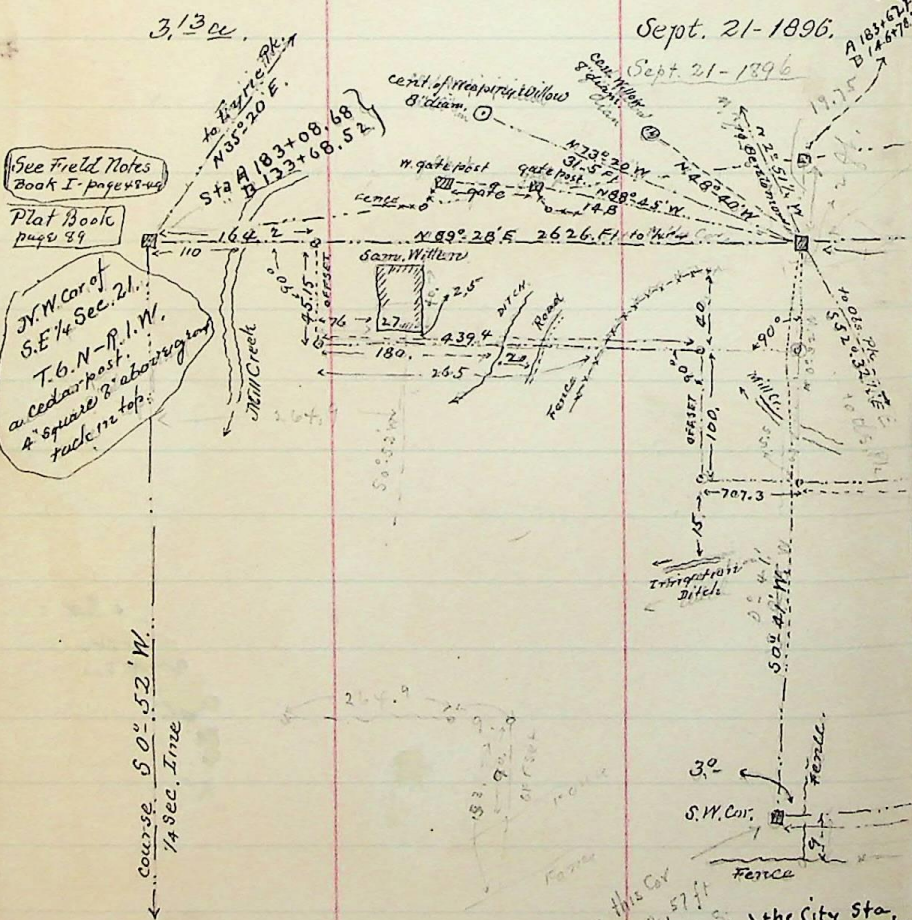


See Field Book
I-p, 48-49-63
Plat Book p. 89

28-235, Roxana Paddock to Robert C. McEwan,
Pt. S.E. 1/4 Sec. 21. Tp. 6. N-R. 1. W. - Beg. at a
Pt. 1310.2 Ft. E. of N.W. Cor. S.E. 1/4 Sec.

Thence 261.5 Ft. S. 52.1/10 Ft. W. 261.5 Ft. N. 52.1/4 Ft. to beg.

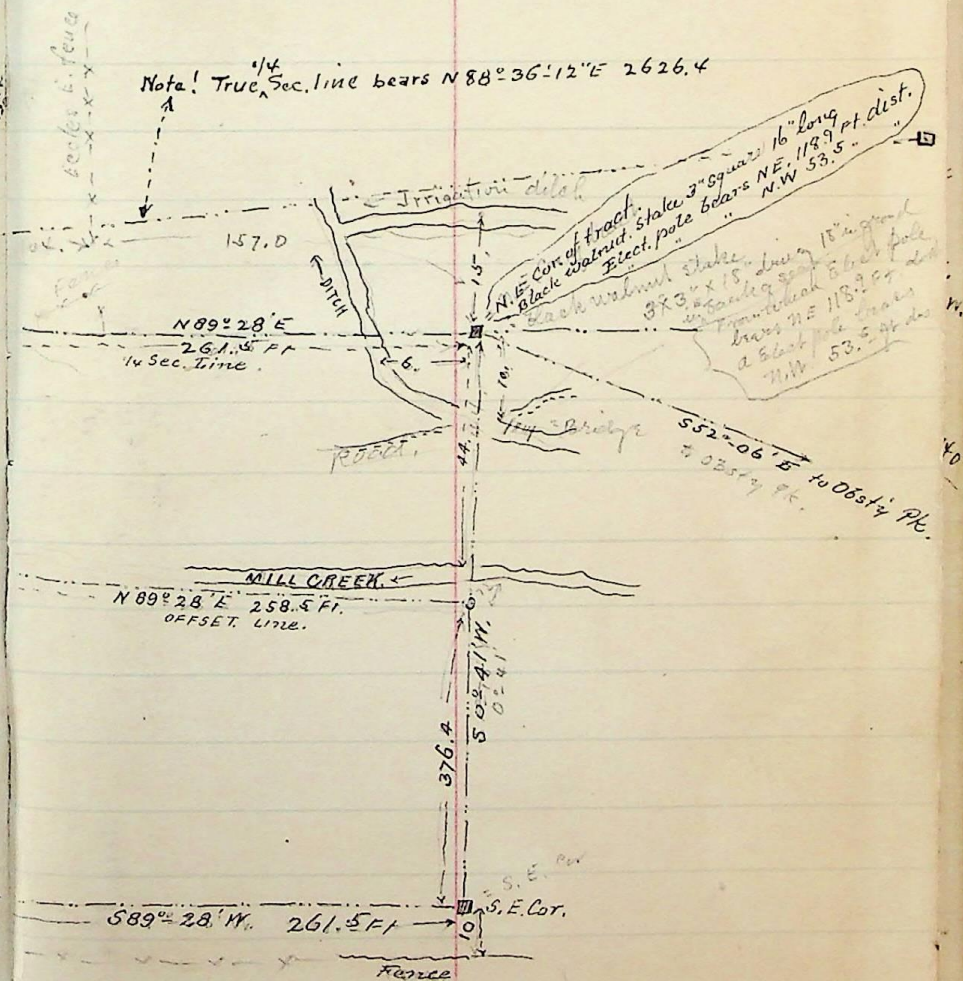


Note - this Cor
Should be 2.57 ft
N. and 9.7 ft. E
of the line run
77° 02' 58" E
551.09 ft
to intersect N. line
of Cor as shown
A 178+11.6
B 146+78.2

32.

Description of survey made for Asael Farr, Feb. 22-98

Pt. S.E. 1/4 Sec. 21. T. 6. N-R. 1. W. Beg. 264.9 Ft. E. of N.W. Cor. S.E. 1/4.
thence E. 261.5 Ft. - S. 52.1/4 Ft. - W. 261.5 Ft. - N. 52.1/4 Ft. to beg.



3
0
3
9
4
7
3